



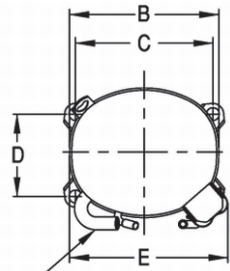
UNCONTROLLED COPY

KULTHORN KIRBY PUBLIC CO.,LTD.

TECHNICAL SPECIFICATION

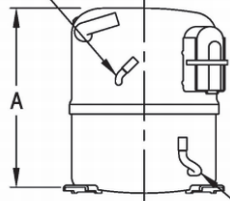
**HERMETIC
COMPRESSOR
WJ 2455ZK-P
BOM ID 81J-A1**

PRINCIPAL DIMENSIONS - mm



A	264
B	223
C	203
D	122
E	239

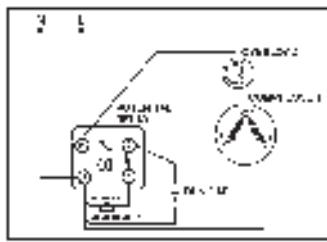
SUCTION TUBE 12.85 I.D.
PROCESS TUBE 7.95 I.D.



DISCHARGE TUBE 9.65 I.D.

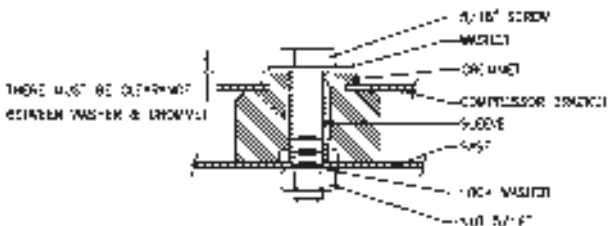
SCHEMATIC WIRING DIAGRAM

SCHEMATIC WIRING DIAGRAM C.S.R.



High Torque Start

MOUNTING KIT



ELECTRICAL : 220-240 Volt. 50 Hz. 1 Phase

Nominal Performance

Cooling Capacity :	1,378	Watts (4,702)	BTU/Hr
	1,185	Kcal/Hr	
Power Input :	1,050	Watts	
Lock Rotor Amps :	35	Amps	
Rated Load Amps :	4.9	Amps	
COP (EER) :	1.31	W/W (4.48)	BTU/ W-Hr

Testing Conditions

Condensing Temperature :	54.4	° C
Evaporating Temperature :	-23.3	° C
Liquid Temperature :	32.2	° C
Return Gas Temperature :	32.2	° C
Ambient Temperature :	32.2	° C

Application

Evaporating Range :	LBP	@ -35 ° C to -10 ° C
Refrigerant :	R404A	
Expansion :	Capillary Tube	
Compressor Cooling :	Fan	

Compressor and Motor data

Compressor Type :	Reciprocating
Displacement :	30.5 cc.
Oil Type :	Polyolester Oil
Oil Charge :	850 cc.
Motor Type :	C.S.R. ; 2 Pole 2880 rpm
Voltage Range :	198-264 Volts 50 Hz.
Winding Resistance at 25 ° C	
Start :	4.79 Ohms
Run :	1.93 Ohms
Weight with Oil :	22.48 Kg.
Weight with Oil and Accessories :	23.23 Kg.

Electrical Components

Motor Protector :

Type :	External Overload 3/4"
Model Number :	KME 664-15/C
Open / Close :	110-120 70-52 ° C
1st Cycle trip :	27.3 Amps (start) Amps (main)

Motor Starter (CSR Only) :

Type :	Potential Relay
Model Number :	KGE 680 (GE3ARR3UX3AT2)
Pick Up :	186-215 Volts.
Drop Out :	40-90 Volts.
Terminal Cover :	KGM 901-1

Start Capacitor (CSR Only) : 145-174 μ F 330 VAC.

Disch. Resistor for Start Cap : 15000 Ohms 2 W

Run Capacitor : 25 μ F 440 VAC.

Mounting Kit

Rubber Grommet :	KGM 905
Sleeve Grommet :	KGM 903

Since we are constantly improving our product ,
the specification are subject to change without notice.

REV. DATE

07-05-11

C / N No.

0164/11