



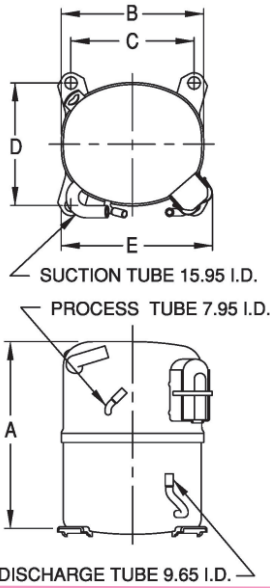
UNCONTROLLED COPY

KULTHORN KIRBY PUBLIC CO.,LTD.

TECHNICAL SPECIFICATION

**HERMETIC
COMPRESSOR
AW 2464ZK
BOM ID 65B-A1**

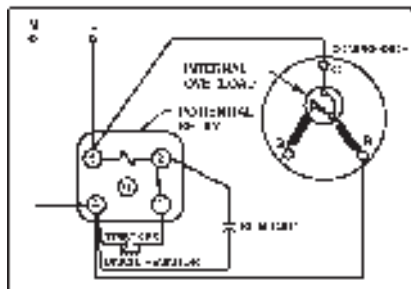
PRINCIPAL DIMENSIONS - mm



A	289
B	223
C	191
D	191
E	239

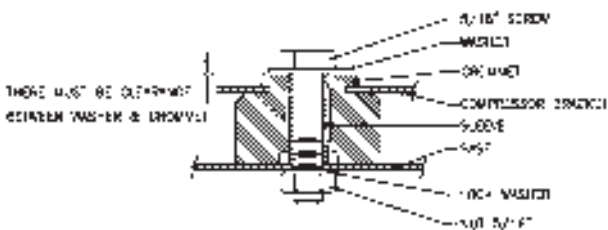
SCHEMATIC WIRING DIAGRAM

SCHEMATIC WIRING DIAGRAM C.S.R.



High Torque Start

MOUNTING KIT



ELECTRICAL : 220-240 Volt. 50 Hz. 1 Phase

Nominal Performance

Cooling Capacity :	1,580	Watts (5,391)	BTU/Hr
	1,359	Kcal/Hr	
Power Input :	1,280	Watts	
Lock Rotor Amps :	43	Amps	
Rated Load Amps :	6.9	Amps	
COP (EER) :	1.23	W/W (4.21)	BTU/ W-Hr

Testing Conditions

Condensing Temperature :	54.4	° C
Evaporating Temperature :	-23.3	° C
Liquid Temperature :	32.2	° C
Return Gas Temperature :	32.2	° C
Ambient Temperature :	32.2	° C

Application

Evaporating Range :	LBP	@ -34.4 ° C to -12.2 ° C
Refrigerant :	R404A	
Expansion :	Capillary Tube	
Compressor Cooling :	Fan	

Compressor and Motor data

Compressor Type :	Reciprocating
Displacement :	43.1 cc.
Oil Type :	Polyolester Oil
Oil Charge :	1,067 cc.
Motor Type :	C.S.R. ; 2 Pole 2880 rpm
Voltage Range :	198-264 Volts 50 Hz.
Winding Resistance at 25 ° C	
Start :	4.38 Ohms
Run :	1.52 Ohms
Weight with Oil :	25.89 Kg.
Weight with Oil and Accessories :	26.20 Kg.

Electrical Components

Motor Protector :

Type :	Internal Overload
Model Number :	KGE 656-8
Open / Close :	130-140 78-60 ° C
1st Cycle trip :	29 Amps (start) 51 Amps (main)

Motor Starter (CSR Only) :

Type :	Potential Relay
Model Number :	KGE 680 (GE3ARR3UX3AT2)
Pick Up :	186-215 Volts.
Drop Out :	40-90 Volts.
Terminal Cover :	KGM 901-2

Start Capacitor (CSR Only) :

Disch. Resistor for Start Cap :	15000 Ohms 2 W
---------------------------------	----------------

Run Capacitor :

	30 μ F 440 VAC.
--	-----------------

Mounting Kit

Rubber Grommet :	KGM 905
Sleeve Grommet :	KGM 903

Since we are constantly improving our product ,
the specification are subject to change without notice.

REV. DATE

19-07-10

C / N No.

0328/10