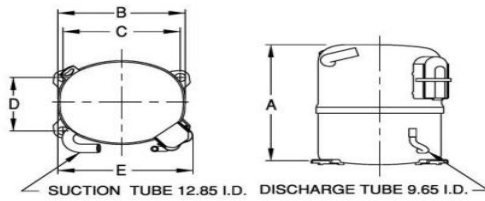




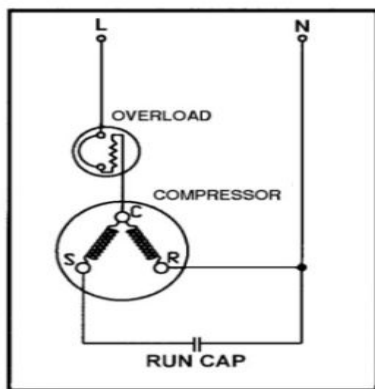
UNCONTROLLED COPY

PRINCIPAL DIMENSIONS - mm



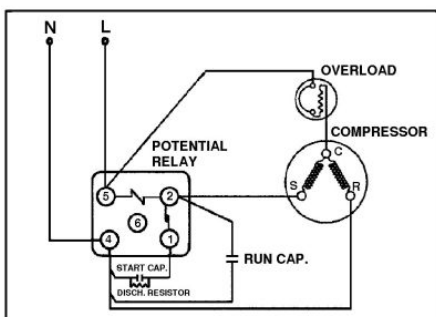
A: 264	B: 223	C: 203	D: 122	E: 239
--------	--------	--------	--------	--------

SCHEMATIC WIRING DIAGRAM -

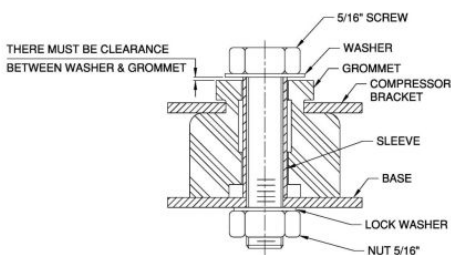


Low Torque Start

SCHEMATIC WIRING DIAGRAM -



MOUNTING KIT



Electrical : 220-240 V/50 Hz. 1 Phase

Nominal Performance

Capacity	2,690 / - Watts
	9,178 / - BTU/Hr
	2,313 / - Kcal/Hr
Power Input	1,094 / - Watts
Locked Rotor Amps	28.00 / - Amps
Max Continuous Current	- / - Amps
Rated Load Amps	5.50 / - Amps
COP	2.46 / - Watts / Watts
EER	8.39 / - BTU/W-Hr

Testing Conditions

Condensing Temperature	54.40 °C	129.9 °F
Evaporating Temperature	7.20 / - °C	45.0 / - °F
Liquid Temperature	46.10 °C	115.0 °F
Return Gas Temperature	35.00 °C	95.0 °F
Ambient Temperature	35.00 °C	95.0 °F

Application

Evaporating Temp. Range	HBP	@ 0.00 ° C to 13.00 ° C (32.0° F to 55.4° F)
	Heat Pump	- ° C to - ° C (-° F to -° F)
Refrigerant	R22	
Refrigerant Flow Control	Capillary Tube	
Compressor Cooling	Fan	

Compressor and Motor data

Compressor Type	Reciprocating
Displacement	19.80 cc.
Oil Type	Mineral Oil
Oil Charge	19.80 cc.
Motor Type	P.S.C ; 2 Pole 2,880 / - r/m
Voltage Range	198-264/- Volts 50/- Hz.

Winding Resistance at 25 ° C

Start	5.10 Ohms
Run	2.45 Ohms
Weight with Oil	20.90 Kg.
Weight with Oil and Accessories	21.54 Kg.

Electrical Components

Motor Protector

Type	External 3/4"
Model Number	KME 664-15/C
Open / Close	110-120 / 70-52 ° C
1st Cycle trip at 25 ° C	27.3 Amps(start) - Amps(main)

Motor Starter

Type	Potential Relay
Model Number	KGE 680 (GE3ARR3UX3AT2)
Pick Up (max.)	186.00-215.00 Amps
Drop Out (min.)	40.00-90.00 Amps
Terminal Cover	KGM 901-1
Start Capacitor	88-106 µF 330 VAC.
Disch Resistor for Start Cap	-
Run Capacitor	15 µF 440 VAC.

Mounting Kit

Rubber Grommet	KGM 905
Sleeve Grommet	KGE 903
Washer	-

Since we are constantly improving our product , the specification are subject to change without notice.

REV. DATE
20-04-13

C / N No.
0188/13

Certificate Marks

