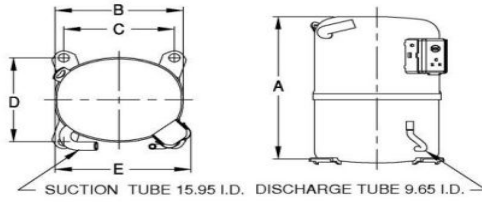




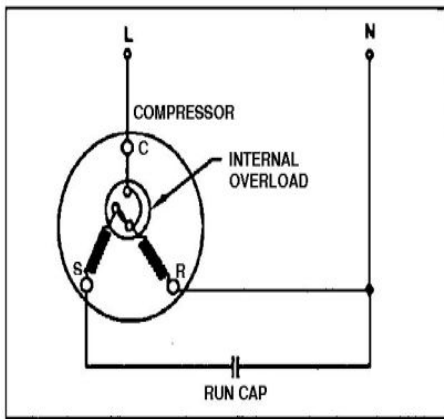
UNCONTROLLED COPY

PRINCIPAL DIMENSIONS - mm



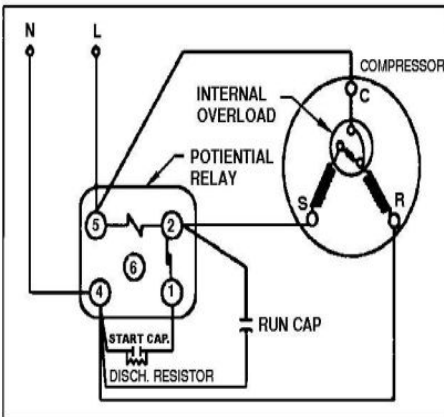
A: 324 B: 223 C: 191 D: 191 E: 239

SCHEMATIC WIRING DIAGRAM P.S.C.



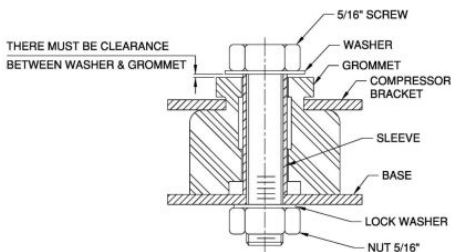
Low Torque Start

SCHEMATIC WIRING DIAGRAM C.S.R.



Option for High Torque Only

MOUNTING KIT



Electrical : 220-240 V/50 Hz. 1 Phase

Nominal Performance

Capacity	5,667 / - Watts
	19,336 / - BTU/Hr
	4,873 / - Kcal/Hr
Power Input	1,895 / - Watts
Locked Rotor Amps	54.10 / - Amps
Max Continuous Current	- / - Amps
Rated Load Amps	8.70 / - Amps
COP	2.99 / - Watts / Watts
EER	10.20 / - BTU/W-Hr

Testing Conditions

Condensing Temperature	54.40 °C	129.9 °F
Evaporating Temperature	7.20 / - °C	45.0 / - °F
Liquid Temperature	46.10 °C	115.0 °F
Return Gas Temperature	35.00 °C	95.0 °F
Ambient Temperature	35.00 °C	95.0 °F

Application

Evaporating Temp. Range	HBP	@ - ° C to - ° C
		(- ° F to - ° F)
	Heat Pump	- ° C to - ° C
		(- ° F to - ° F)
Refrigerant	R22	
Refrigerant Flow Control	Capillary Tube	
Compressor Cooling	Fan	

Compressor and Motor data

Compressor Type	Reciprocating
Displacement	39.60 cc.
Oil Type	Mineral Oil
Oil Charge	964.00 cc.
Motor Type	C.S.R. ; 2 Pole 2,850 / - r/m
Voltage Range	198-264/- Volts 50/- Hz.

Winding Resistance at 25 ° C

Start	3.70 Ohms
Run	1.43 Ohms
Weight with Oil	26.68 Kg.
Weight with Oil and Accessories	27.00 Kg.

Electrical Components

Motor Protector

Type	Internal Overload
Model Number	KGE 656-4
Open / Close	115-125 / 78-60 ° C
1st Cycle trip at 25 ° C	29.0 Amps(start) 47.0 Amps(main)

Motor Starter

Type	Potential Relay
Model Number	KGE 680-1 (GE3ARR3AX16A2)
Pick Up (max.)	242.00-272.00 Amps
Drop Out (min.)	60.00-121.00 Amps
Terminal Cover	KGM 901-3
Start Capacitor	88-106 µF 330 VAC.
Disch Resistor for Start Cap	-
Run Capacitor	35 µF 370/440 VAC.

Mounting Kit

Rubber Grommet	KGM 905
Sleeve Grommet	KGM 903
Washer	-

Since we are constantly improving our product , the specification are subject to change without notice.

REV. DATE
20-04-13

C / N No.
0188/13

Certificate Marks

